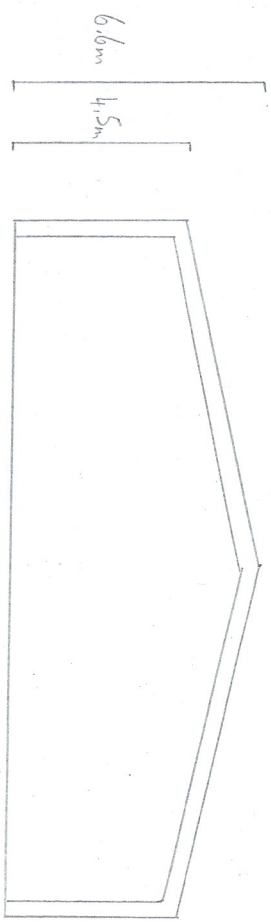


Elevation Plan

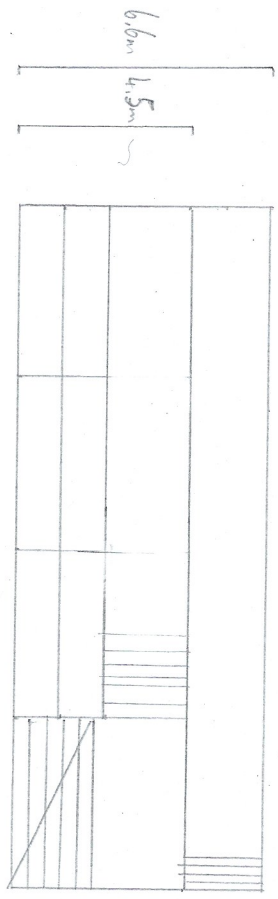
North & East



North Elevation

18,29m

Connecting to existing shed, no cladding required



East Elevation

18,29m

Fibre Cement Roof

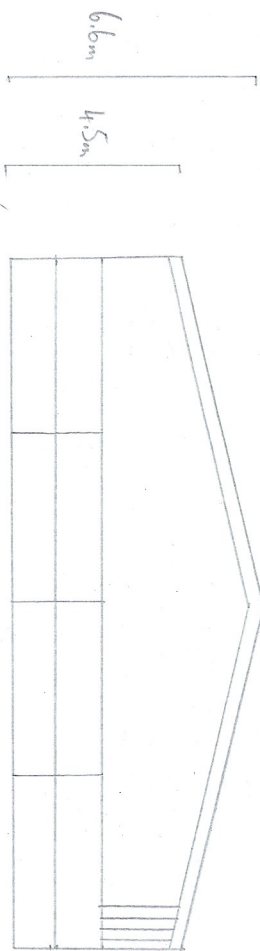
Galebraker & Juniper Green Cladding

Panel Gate & Concrete Panels (2.4m)

1:200

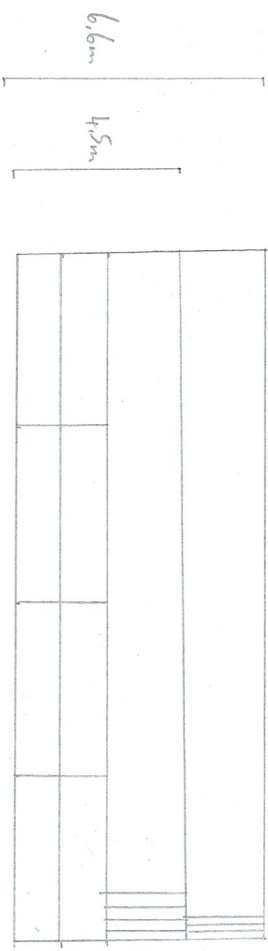
Elevation Plan

South & West



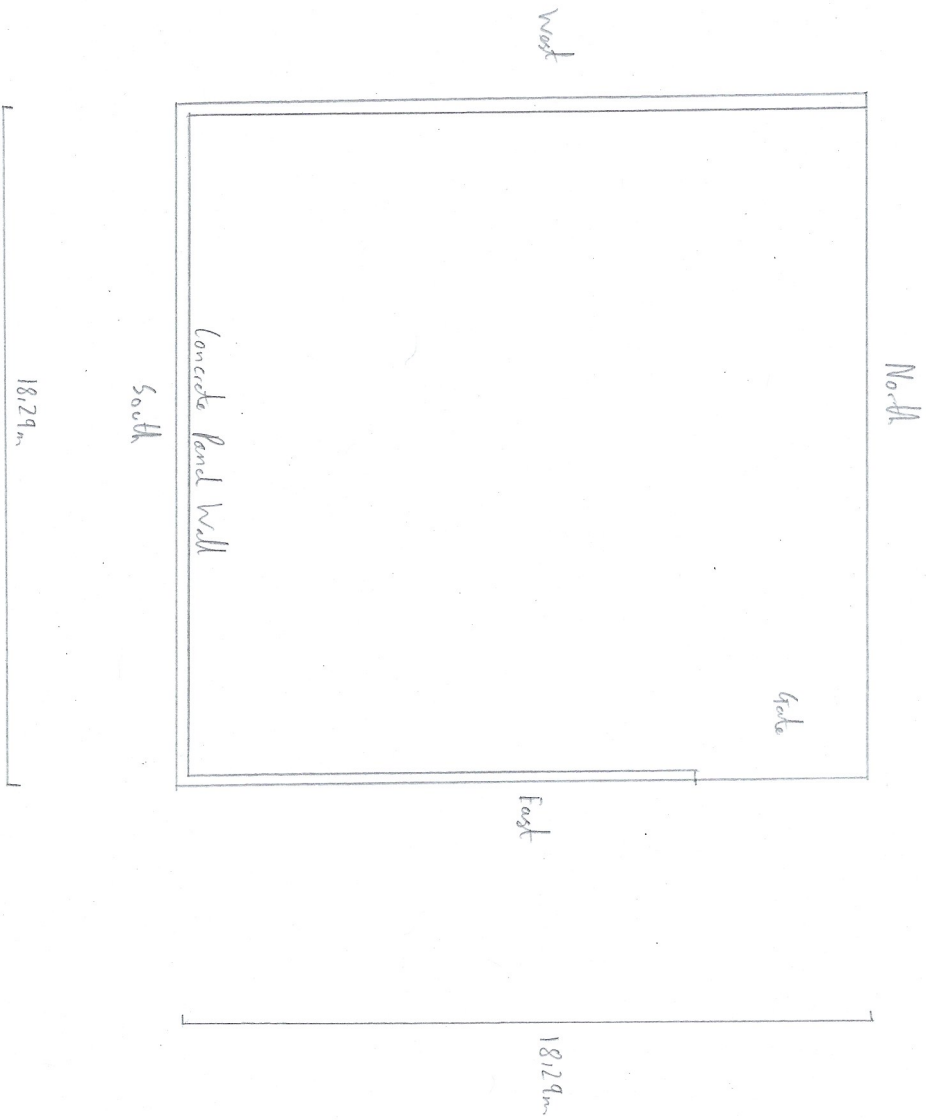
South Elevation 18.29m

Yorkshire Boarding  
Concrete Panels (2.4m)



West Elevation 18.29m

Fibre Cement Roof  
Yorkshire Boarding  
Concrete Panels (2.4m)



1:200