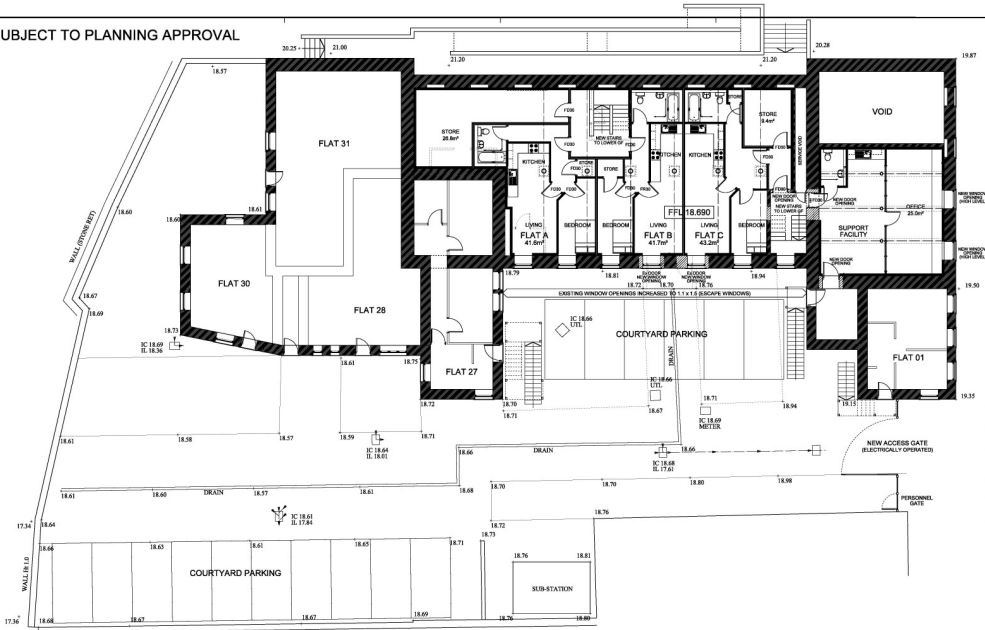


SUBJECT TO PLANNING APPROVAL

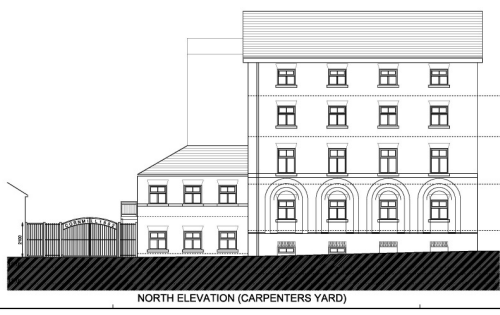


NOTES

1. THIS COPY HAS BEEN MADE BY OR WITH THE AUTHORITY OF THE ARCHITECT. ANY OTHER COPY IS UNLAWFUL.
2. THIS COPY HAS BEEN MADE BY OR WITH THE AUTHORITY OF THE ARCHITECT. ANY OTHER COPY IS UNLAWFUL.
3. THIS COPY HAS BEEN MADE BY OR WITH THE AUTHORITY OF THE ARCHITECT. ANY OTHER COPY IS UNLAWFUL.
4. THIS COPY HAS BEEN MADE BY OR WITH THE AUTHORITY OF THE ARCHITECT. ANY OTHER COPY IS UNLAWFUL.
5. THIS COPY HAS BEEN MADE BY OR WITH THE AUTHORITY OF THE ARCHITECT. ANY OTHER COPY IS UNLAWFUL.

THIS COPY HAS BEEN MADE BY OR WITH THE AUTHORITY OF THE ARCHITECT. ANY OTHER COPY IS UNLAWFUL.

CARPENTERS YARD



ENTRANCE GATES GALVANNESED & POWDER COATED BLACK RAL 9005

W&P
Waller & Partners
ARCHITECTS
INTERIOR DESIGNERS

PROJECT MANAGERS
ARCHITECTURAL DESIGNERS

LOWER GF CONVERSION
CORNMILL
MALTON
IMPACT LIVING

PROPOSED
PLAN AND ELEVATIONS

DATE: 11/08
BY: JG
CHECKED: JG
DATE: 20/08/20

REF: 4770/07