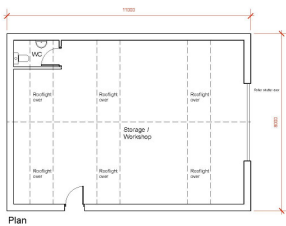
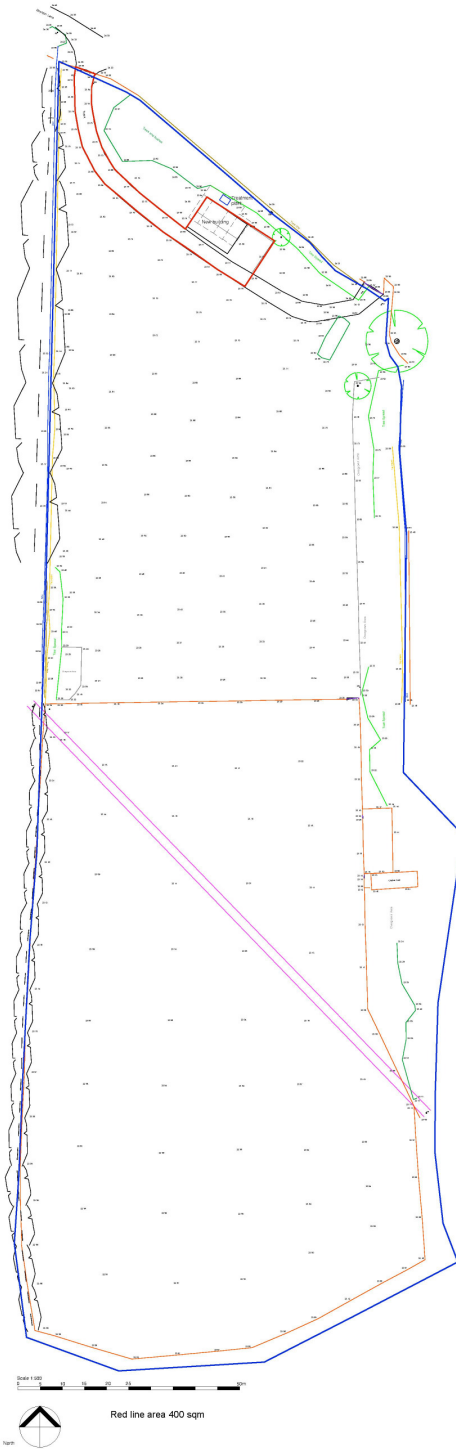


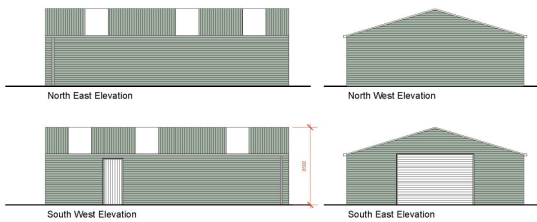
RYEDALE LAND SURVEYS  
 07880 912641  
 risurveys@btinternet.com

**REVISED PLAN**

THIS COPY HAS BEEN MADE BY OR WITH THE AUTHORITY OF RYEDALE DISTRICT COUNCIL PURSUANT TO SECTION 41 OF THE COPYRIGHT DESIGNS AND PATENTS ACT 1988, UNLESS THAT ACT PROVIDES A RELEVANT EXCEPTION TO COPYRIGHT. THE COPY MUST NOT BE COPIED WITHOUT THE PRIOR PERMISSION OF THE COPYRIGHT OWNER.



Proposed Workshop 1:100



**MATERIALS**  
 Galvalume horizontal weatherboarding in  
 Mournd Green  
 Mournd Green Steel Sheet roofing  
 AS 35-45mm Composite PIR



**YEW TREE ASSOCIATES**  
 LAND TOWN PLANNING & DEVELOPMENT CONSULTANTS

Boynton Lane Butterwick  
 Agricultural Storage and Workshop SITE and PLAN + ELEVATIONS  
 Scale: 1:500 and 1:100 as A1

Dwg No BW 02 D  
 Rev 2 of 16 2011 Window removed