

Ground Floor

Approx. 92.9 sq. metres (1000.4 sq. feet)



Existing floor plan

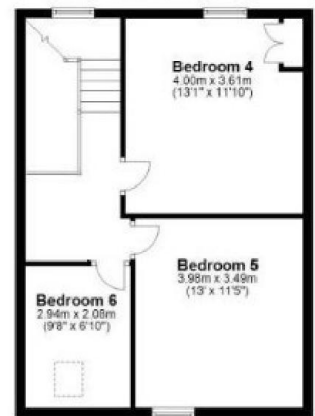
First Floor

Approx. 47.5 sq. metres (511.4 sq. feet)



Second Floor

Approx. 46.6 sq. metres (501.2 sq. feet)



Total area: approx. 187.0 sq. metres (2013.0 sq. feet)
93 Langton Road, Norton