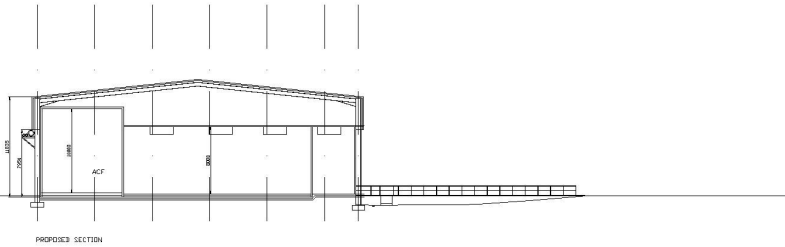
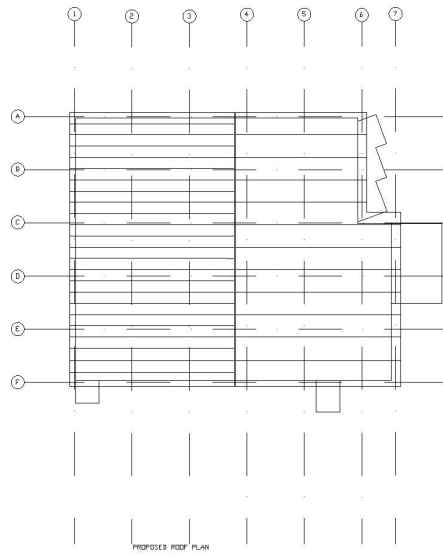
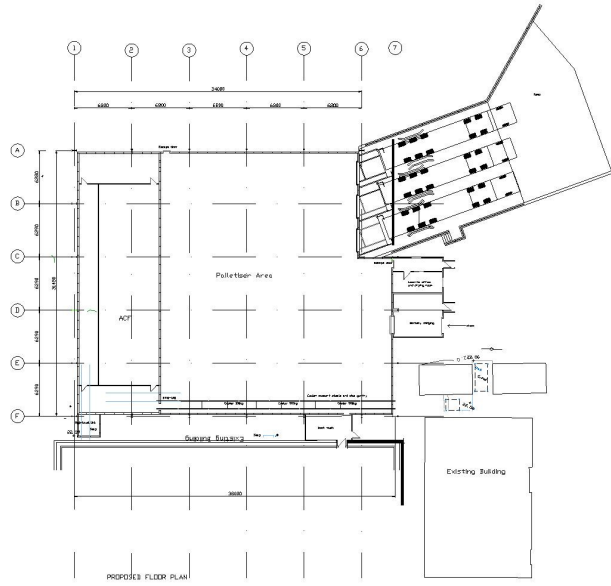


THIS DOCUMENT IS THE PROPERTY OF KARRO ARCHITECTURAL SERVICES LTD. IT IS TO BE USED ONLY FOR THE PROJECT AND SITE SPECIFICALLY IDENTIFIED HEREIN. IT IS NOT TO BE REPRODUCED, COPIED, OR TRANSMITTED IN ANY FORM OR BY ANY MEANS, ELECTRONIC OR MECHANICAL, INCLUDING PHOTOCOPYING, RECORDING, OR BY ANY INFORMATION STORAGE AND RETRIEVAL SYSTEM, WITHOUT THE WRITTEN PERMISSION OF KARRO ARCHITECTURAL SERVICES LTD.

DO NOT SCALE - IF IN DOUBT, ASK!



KARRO

DC ARCHITECTURAL SERVICES LTD
 ARCHITECTS AND BUILDING DESIGNERS
 The Belfry, Trinity Mills Farm, Lutterworth, PE16 4PE
 01535 535000
 www.karroarchitects.co.uk

KARRO ARCHITECTS LTD HAS BEEN AWARDED AN ACCREDITATION FROM THE ARCHITECTS' REGISTRATION BOARD (ARB) FOR THE DESIGN OF BUILDINGS.
 www.karroarchitects.co.uk

PROJECT: PROPOSED PLANNING SECTION
 DRAWING NO: DC /ST/40 / 204
 DATE: JAN 2021
 SCALE: 1:200
 DRAWN BY: B