

Contents

STATEMENT BY THE PARISH COUNCIL.....	2
BRIEF HISTORY OF APPLETON LE MOORS.....	3
PARISH PLAN STEERING COMMITTEE.....	4
ACKNOWLEDGEMENTS	
HISTORY OF THE PARISH PLAN PROCESS	
CONSULTING YOUNG PEOPLE	
TIME FOR ACTION.....	6
SUMMARY OF QUESTIONNAIRE FEEDBACK.....	9
DEMOGRAPHICS	
RETAIL SERVICES	
PUBLIC SERVICES	
SOCIAL AND COMMUNITY	
VITAL VILLAGES QUESTIONNAIRE FEEDBACK.....	10
DEMOGRAPHICS	
COMMUNITY BUILDINGS AND ASSETS ROAD	
COMMUNITY AND PUBLIC SERVICES	
ROAD TRAFFIC	
COMMUNITY ENVIRONMENT	
COMMUNITY ACTIVITIES	
TRANSPORT	
ADDITIONAL COMMENTS	
ACTION PLANS.....	21
COMMUNITY ACTIVITIES AND RETAIL SERVICES	
SPECIAL INTEREST GROUPS	
PARISH COUNCIL	
NORTH YORK MOORS NATIONAL PARK AUTHORITY	
PUBLIC TRANSPORT	
RYEDALE DISTRICT COUNCIL	

A STATEMENT BY THE APPLETON LE MOORS
PARISH COUNCIL

The Appleton le Moors Parish Council would like to take this opportunity to thank everybody involved in the production of The Parish Plan.

The very comprehensive Questionnaire circulated to every individual in the Parish provided an ideal opportunity to voice opinions and concern on a substantial range of topics. We would like to thank the seventy percent of people who took the time to fill in the Questionnaire. By doing so you have made your Parish Council aware of your views on many subjects of interest and concern. Without some degree of structured feed back it is very difficult for local democracy to operate.

We would particularly like to express our appreciation of the Parish Plan Steering Committee. This group have given up that most precious of commodities, time. They approached the project in a very professional and enthusiastic manner, keeping the Parish Council fully informed at all stages of the process. They also ensured that all villagers were aware of the progress of the Plan through the medium of three "Open Days" events, five newsletters and a regularly updated section on the Village website.

With the publication of the Parish Plan a framework is in place for parishioners to address the issues from the Questionnaire that concern and interest them.

Residents of Appleton le Moors should now look forward to putting into action some of the conclusions of the report. Certain actions fall within the Parish Council's remit but the majority are a matter for interested groups or individuals within the Parish to pursue. The Parish Council will do everything within its power to support any initiatives that are for the general good and well being of the Parish, the Village and its inhabitants.

J. Welburn (Chairman)

L. Waines

M. Grayson

J. Hall

M. Smith

A very brief history of Appleton le Moors

At 400 feet above sea level Appleton stands on Corallian limestone sloping towards the vale of Pickering in the south. The first recorded mention of Appleton le Moors was as 'Apletun' in 1086, although flint tools and arrow heads indicate the presence of people since the last Ice Age. Spaunton Common and around Hamley lane were densely wooded areas. Local place names like 'Cat' and 'Hagg' mean woods or their management. In successive centuries as the village evolved so would its name; Wodapleton, Dweldapleton, Woodapleton to Appleton in the Moors.

Bronze Age farmers are known to have settled here on the fertile free draining soil. At least 8 barrows or burial sites were constructed at the bottom of Appleton Common (where today the road meets the A170.)

2,000 years later the Romano-British occupied the area as evidenced by pottery and coins found in Appleton. A Romano-British burial cyst was unearthed at the northern parish boundary with Spaunton.

In Anglo-Saxon times the settlement became properly organised along the spring line at the south end of the village. Evidence of a mediaeval communal oven and chapel has been discovered. During this period Appleton evolved as single main street; the houses that create the L-shape down to the common are relatively late additions. The term garth, commonly used in the 17th and 18th centuries, describes the house and its strip of land. Many garths in Appleton are the same length, extending to the back lanes. Their uniform length gives the village its very regular, planned shape.

Outlying farms and houses in the Parish tend to have been established in the 18th century following the enclosure of land. However Appleton Mill has been harnessing the waters of the river Seven to mill corn from at least 1236 right up to 1940.

In the 19th century the rise in the fortunes of village boy Joseph Shepherd had a significant effect on the appearance and facilities of Appleton. He and his wife are responsible for several 'new' buildings i.e. the Village Hall (originally a school), Christ Church, the old Parsonage (originally a school), and Appleton Hall.

In the earlier part of the 20th century older residents can recall a time when there was a pub, three shops, a post office, a school, a blacksmith, and even a fish and chip shop in the village. Not forgetting the famous Appleton brass band whose drum can be seen in the village hall along with a short written history of its local importance.

(A comprehensive history of Appleton le Moors has recently been published by M. Allison a resident in the parish. Copies can be obtained by contacting her on 01751 417537.)

'Appleton le Moors is a neat little place, with some very good houses. It is surrounded by wild romantic moorland hills, and is now much frequented by summer tourists.'

1890 - Bulmer's History & Directory of North Yorkshire

Parish Plan Steering Committee

Jim Hall

Janet Hayton (Chair)

Steve Lonsdale (Secretary)

Eddie Ward

Dave Rawlings

Lindsey Smith (Treasurer)

Arran Smith

Penny Ward

Acknowledgements

Special thanks to Margaret Farey of Yorkshire Rural Community Council (YRCC), who has been invaluable providing practical support and local knowledge of the process. And of course she kept the steering committee going when it seemed an endless task! Thanks are also due to Nellie Trevellyan who has provided important insights and experience as our local district councilor.

We are grateful to the following people who contributed information or support at various stages of the Parish Plan consultation.

Margaret Allison

Jim Brooke

Helen Beaumont

John Creighton

Alastair Ferguson

Heather Fox

Henry Iles

Chris Ingelby

Marjorie Ingelby

Sylvia Price

Ryedale Youth & Child Project

James Welburn

Anne Wilson

George Winn-Darley

History of the Parish Plan process

Back in 2002 Lindsey Smith (parish clerk) contacted Janet Hayton (secretary of Appleton Recreation Association) because she had information that grants were available for local groups. Janet attended a meeting in Kirkbymoorside which turned out to be the launch of 'Vital Villages'. This was a Government initiative to re-vitalise village life and discover what communities needed at grass roots level. Farndale and Gilamoor were among several rural parishes present at that meeting.

Janet wrote a report of the meeting and presented it to the Appleton le Moors Parish Council who subsequently agreed to support the initiative by becoming the sponsoring organisation of a Parish Plan. The production of the Plan and the consultation with residents would be carried out by volunteers who would form a Parish Plan Steering Committee.

Field worker support was offered together with a small research grant. The research would provide objective evidence to support applications for project funding and help strengthen the case for changing or adding to local services.

Margaret Farey from Yorkshire Rural Community Council became Appleton's field worker. A 'drop in' day for villagers was organised by Janet, Lindsey and Margaret in April 2003. The Ryedale Rural Transport officer and Community Link officer attended the 'drop in' along with various Appleton societies and the Church.

The event attracted about a third of households. Ideas and concerns were recorded on 'Post It' notes; later these formed the basis for the Vital Villages questionnaire. Several residents signed up to join the Parish Plan Steering Committee. The committee members had a wide range of professional skills and networks within the local community. Several other residents offered to help informally. The steering committee prepared a research grant application and budget which was sent to the Countryside Agency. The research funding was finally confirmed in November 2003.

A consultation for younger members of the community was led by Penny Ward and Eddie Ward in the form of a 'fun day' at the village hall during February 2004 half term holidays.

The steering committee compiled a draft questionnaire and circulated to various residents and interested parties for feedback. Steve Lonsdale prepared a separate database for processing and analysing the questionnaire responses. The final version of the questionnaire was distributed to each person in the Parish over the age of seven. The information was processed by YRCC, a feedback report written and the results circulated in August 2004.

A newsletter was created, coordinated and delivered to every household by Eddie Ward and Arran Smith. There was a competition to design a Vital Villages logo and a local history quiz. New web site pages were created and updated by Dave Rawlings available at www.appletonlemoors.co.uk

Jim Hall acted as the group's main representative at all Parish Council meetings, providing updates and answering questions. In July 2004 a special meeting was held to

discuss and agree the **Action Plan**. In September 2004 the Parish Plan document was officially adopted by the Parish Council and approved by the Countryside Agency.

Consulting Young People

As part of the consultation process the steering committee wanted to ensure that the young people in the village would also have an opportunity to "*have their say*". There were two events specifically planned for young people in the village to provide this opportunity. The first was a Fun Day held in February and the second was a separate questionnaire.

The Fun Day attracted twelve youngsters who enjoyed a full fun packed day of activities, games, competitions, creative crafts and using a map of the village had their say in what they would like in Appleton. The activities were provided by Jennie and Andy Brown from Ryedale Child and Youth Project team and members of the steering committee.

Age didn't matter as all the activities were designed so that everyone could take part - from making life-size "Egyptian" mummies using toilet rolls to playing air hockey and table top football. For the more energetic there was paint balling, boxing and exercising on the dance mat. Whilst those interested in creative crafts made clay masks, wax pictures and tile painting.

Throughout the day the youngsters were able to "*have their say*" in what they would like to develop in Appleton by adding their ideas to a collage board. The ideas varied from a skate park, trips out, to caring for the environment and activity clubs. Twelve excited and slightly exhausted young people went home with Certificates, Easter Eggs and a thank you from the steering committee. The adults happily survived to continue with the consultation process.

A special questionnaire designed to capture the ideas of the young people was circulated to 23 young people in the village aged between of 7 and 16. The response rate from the young people was excellent and achieved a 70% return.

The young people expressed interest in a wide range of activities from clubs, fun days and pantomimes to table games, board games, films, IT training and environmental issues.

The interest and enthusiasm shown by the young people throughout the consultation process clearly indicates the need for adequate provision to be made for the young people of Appleton le Moors.

Time for Action

As we can see from the Action Plan, most issues can be tackled by the community itself. Many people have already volunteered. We need to capitalise on the Vital Villages feedback as soon as possible and influence government agencies and funding organisations to back local initiatives.

The Parish Plan Steering Committee will soon disband and specific **Project Groups** will be formed. The action plan shows 11 projects that can be divided into four subject areas; Environmental, Services, Cultural and Social Activities, and Traffic and Transport.

A particular project may only need a couple of people. Some projects could be combined because they involve the same type of work and the same partners e.g. pond and sheepfold restoration.

To help coordinate efforts and support the project groups an **Action Plan Steering Group** will be established. This group will pass on their expertise in grant funding, local and regional government, volunteer networks, project planning and so forth. They will also act as a conduit to the Parish Council and keep it updated.

One suggestion, made via the questionnaire, is that representatives from each of the village groups meet occasionally and pool resources. This has happened informally because some individuals are on more than one committee. A good example would be the recent successful application for a village media projector, screen and laptop. This was supported by several village groups coordinated by the Parish Plan steering committee and will be managed by the village hall committee. We hope that the Action Plan Steering Group will likewise be able to spot opportunities for mutual benefit.

This Parish Plan will be sent to all agencies that have a legal or regulatory interests e.g. Ryedale District Council, North Yorkshire County Council, North York Moors National Park Authority, Countryside Agency, National Playing Fields Association.

Non resident land-owners, existing village committees and institutions will also be sent a copy.

We now have a Parish Plan

We know what we want as a community

We have research data to support our case

We know who and how to ask for help

We know who the decision makers are

Now we can get on and make things happen!

Appleton Le Moors in 2004 - A summary of your feedback

Demographics

Records show that in 1673 there were 45 households in the Parish. In 2004, including the outlying farms, there are 82 households. But given family size today the current population of 174 may not be that different. The age distribution of respondents to the questionnaire shows a significant proportion of older residents possibly reflecting the popularity of this area for retirement.

Residents are employed (or self employed) in a diverse range of jobs. The tendency however is for young people to leave the area to seek careers and better paid jobs. The high cost of private housing locally is seen as a major problem to those who stay but earn local wage rates. Only 12 % of respondents are employed within a 10 mile radius of the village.

Retail Services

The Appleton school closed in 1969, the shops gradually disappeared and the post office closed in 2000. However, because of private transport the travelling distances for education, health and retail services are not a priority concern for residents. It is the quality of the roads and especially road safety that are important. 60% of residents in the survey are based at home and therefore have to travel to access basic services. This may explain why mobile retail vans to the village are widely appreciated. Despite this, in August 2004 the organic shop stopped deliveries because only one customer actually placed a regular order and the Wednesday fish van stopped because of overhead costs. We need to encourage new users by providing more information to secure the economic viability for retailers in the future. It may also be possible to encourage new services like a baker's van and a fish and chip van. The group of older residents will obviously become less independently mobile and will require more services delivered to the doorstep.

There seems to be a real opportunity to manage fuel costs with residents enthusiastic about bulk buying possibilities.

Public Services

Re-scheduling services such as the library and public transport could lead to better usage and certainly more value to the tax payer. Recycling looks like a real possibility based on recent announcements from Ryedale Council. There are a growing number of people who work from home or are retired so reliability of the postal service and telecommunications are also important.

We have a 2004 Action Plan but we should not forget to plan for the future. The current public transport service is barely used. Those without a car, e.g. teenagers, or those who prefer not to drive far would benefit if we can influence bus routes and schedules. Road safety at the A170 turn off needs to be addressed and since the questionnaire was distributed there have been further serious accidents. Within the village there is support for better hazard warning signs and further effort to slow traffic down as they enter and leave the village. With more children becoming old enough to go out on their own, traffic speed needs to be curbed. Six children commented that this was a concern.

Social and Community

In 2002 a review of Ryedale villages appeared in the Gazette and Herald. It categorised Appleton as 'barely active'. In reality, and for such a small community, there are a lot of people organising events, volunteering, fundraising, running clubs and societies etc. Appleton seems to prefer the low profile approach but as we know from the questionnaire results this can mean we don't get the most out of what is on offer. When it comes to communication we need to find more effective methods e.g. newspapers, local newsletter, posters, internet etc. Relying on two small village notice boards is not enough.

The growing number of teenagers have few opportunities for activities locally and they need to be provided for. Improvements to the playing field and a youth club are high on their priority list.

Vital Villages questionnaire feedback

This information was circulated to every household in August 2004. The questionnaires were hand-delivered to 82 addresses covering 174 people. Percentages (%) have been used *except* where recording the number of people makes more sense. The percentages are based on those who returned a completed questionnaire.

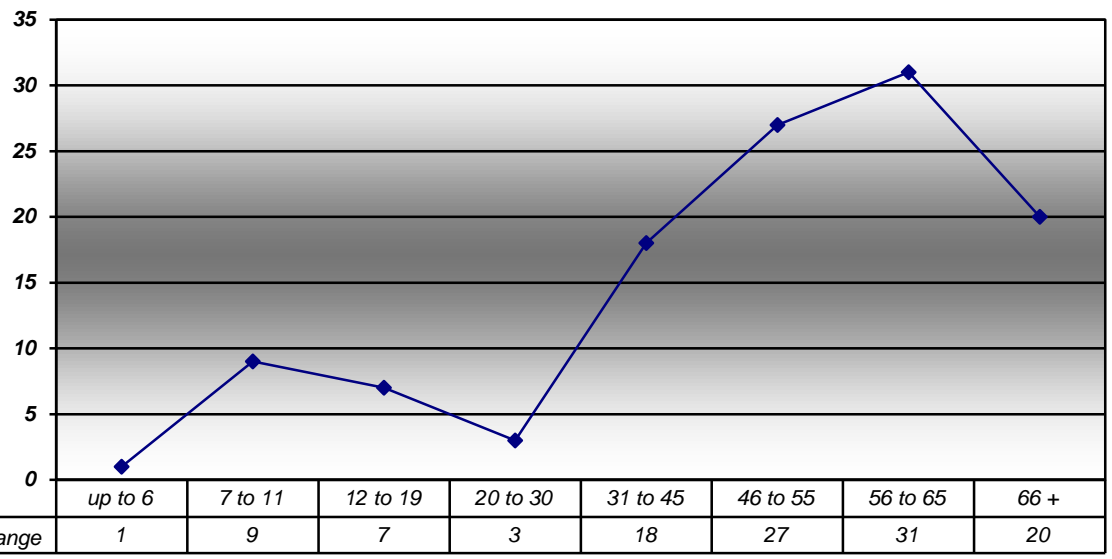
	POPULATION APRIL 2004	% OF POPULATION	NUMBER OF REPLIES	% OF TOTAL REPLIES
Women	82	47%	52	42%
Men	69	40%	47	38%
Adult, details not provided			8	6.5
All Adults	151	87%	107	86.5%
Young people female	11	6.5	9	7.5
Young people male	12	6.5	7	6
All 7 to 16 yrs	23	13%	16	13.5%
Total population	174	100%	123	100%

Employment Sector	% of working adults	Employment status	% of all adults
Public /government / voluntary	18.2	Employed	35 %
Farming/ small holder/equestrian	16.9	Self employed	23 %
Construction/trades/ manufacturing/engineering	16.9	Part time volunteer	5 %
Research/consultancy/legal	10.4	Retired / home mgt.	28 %
Design/arts/crafts	10.4	Other	9 %
Catering/ hospitality/ tourism	9.1		
Transport /vehicle repair	1.4		
Retail/wholesale	0.0		
Other, not stated	16.7		

Place of Residence	% of all adults
Main residence <i>in</i> the Parish	93 %
Main residence <i>out</i> of the Parish	6 %
No response	1 %

Distance to work place	% all working adults
Workplace within 10 miles	12 %
Workplace more than 10 miles	21 %
Based at home for work or retired	60 %

Age Profile



Community Buildings and Assets

Church and Chapel

The following chart shows what residents think are **important** about the church and Chapel.

	Christ Church	Chapel
Special occasions e.g. weddings	62 %	3%
Special services e.g. Christmas	59 %	4%
Historic building	56 %	4%
Contributor to village life	51 %	7%
Times of personal need	43 %	4%
Regular worship	24 %	3%

Village Hall

We asked what would encourage people to use the village hall more. The numbers refer to people who made similar suggestions. 15 respondents felt the hall is already well run and meets their needs. 4 people remarked that the acoustics need to be improved.

Ideas	Adults	Youth
Promote village hall as a venue for classes, meetings and music e.g. bring in more events	14	
Better information and publicity about events e.g. people don't always know what's on.	10	
New ideas e.g. themed party nights, disco's, New Years Eve	6	5
More of the same events e.g. barbeques, rural arts, karaoke, family quizzes	5	2
Games nights / beetle drives	2	
Youth club*		3
Village pantomime*/ play /show		3
Fun days e.g. Vital Villages fun day		3

(*indicates a specific subject only covered in the youth questionnaire e.g. Youth Club*)

Village Playing Field

Maintenance

48% of the adult respondents would consider an increase in the Parish Precept (*part of the Community charge*) to fund maintenance on a regular basis.

Activities and Facilities

The youth questionnaire asked what young people currently enjoyed doing and ideas for the future. The most popular **activities** are tennis (82%) followed by swings (38%) and basket ball (26%). For the future, 51% want tree planting and a nature reserve.

The most popular **facilities** request is for a climbing frame, followed by the ability to play football and building a shelter. For the future tennis tournaments, school holiday activities, barbeques, family days orienteering, skateboarding, and camping were suggested. A pavilion/shelter was mentioned by 2 adult residents to encourage the use of the field and tennis court.

Village pond restoration

77% want to see the pond restored. 12 people have volunteered so far. One person thought a pond might attract visitors and therefore litter, 4 respondents saw it as dangerous to children.

Village sheepfold restoration

There are 69% in favour of restoring the sheep fold, 10 people have already volunteered to help.

The Reading Room

The following activities and uses were suggested by 50 residents. 3 residents complimented the volunteers on their efforts.

Ideas	Adults	Youth
Talks & lectures	19	
Films and video shows	17	6
Pool /snooker / billiards	7	7
Local History	6	
Board games e.g. chess, dominoes, whist	4	3
Use for 'small' community groups	5	
Arts based activities e.g. painting, photography	3	
Music appreciation	2	
Other ideas		
Garden club, DIY skills, cheese & wine, story tellers, bonfire night, current affairs, wildlife club, table tennis, darts.		

Community and Public Services

Street lighting

A change to lighting was not necessary for 76% of respondents. 14% of residents want changes; 5% want a decrease in levels, whilst 9% an increase. The sodium lighting was disliked by 3 residents and the north end of the village is 'too dark' for 2 residents.

Recycling

On average 75% want recycling facilities close to or in the village. Six people cited the facilities at Kirkbymoorside & Pickering as their reason for not needing something closer.

7 people suggested that textiles and clothes could be collected. The recycling of books and batteries were also suggested by 2 people. Silage wrap was suggested as another type of plastic that might be recyclable. The sewerage farm was mentioned as a suitable location by 1 resident.

Residents in favour of recycling			
Glass	81%	Plastics	71%
Newspapers	73%	Aluminum /foil	65%

Refuse Collection

Negative comments focused on bins not being returned to the right place, lack of recycling options and lack of flexibility in taking materials like cardboard.

very dissatisfied	dissatisfied	satisfied	very satisfied	<i>No response</i>
4%	10%	65%	17%	4%

Road gritting and snow clearance

Single comments were the lack of snow clearance on pavements and that things seemed to have improved over previous years.

very dissatisfied	dissatisfied	satisfied	very satisfied	<i>No response</i>
4%	10%	65%	17%	4%

Road maintenance

5 critical comments focused on the condition of the Lavington road.

very dissatisfied	dissatisfied	satisfied	very satisfied	<i>No response</i>
20%	25%	41%	4%	10%

Drainage and ditching

The Lavington road is mentioned 3 times as being poorly drained. There were also 2 comments about blocked drainage channels in the village.

very dissatisfied	dissatisfied	satisfied	very satisfied	<i>No response</i>
20%	26%	41%	4%	9%

Police Service

Only 4 (out of 107) adults know who the local beat officer is for the village. Below is a summary of the kinds of initiatives that have community support.

Crime prevention measures	Supporting
Neighbourhood Watch Scheme	61%
Greater police presence	40%
Advice leaflets	28%
Public advice session	20%

Mobile library

Presently 20 adults said they use the service and a further 22 adults and 8 young people may use it if they had more information.

Retail services

The questionnaire asked which existing services would be used more if there was information available and what additional services would be welcomed.

1 resident commented that delivery services are not useful if people are out all day. 2 adults would like to see an ice-cream van visit.

Existing Service	% using currently	Potential new customers		Total no. potential customers
		Adult	Youth	
Fruit and Vegetables	57%	18	6	24
Butcher	15%	22		22
Organic	7%	21		21
Fish	42%	18		18
Milk	35%	7		7
Suggested new service				
Fish & Chips		42	13	55
Baker		39	10	49
Video & DVD		34	15	49
IT Training		32	4	36
Hairdressing		4		4

Bulk discounts for fuel

71 adults would be willing to switch oil supplier and 57 would change their coal/logs supplier if bulk discounts could be organised. (The number of households may be fewer.)

Gas supply

Assuming a connection charge, 51 people would like to see a gas supply brought to the village. (The number of households may be fewer.)

Broadband

43 people are interested in being connected to broadband of which 23 have already registered an interest.

Tourism

71% of adults and 81% of young people said no to an increase in tourism. Few people would derive any economic benefit from an increase in tourism. (See analysis of occupations.) When asked if an increase in tourism to the village was desirable 16% said yes. Those that answered yes had ideas that fell into two broad groups.

- Information points related to local walks and history
- Availability of food/refreshment during the day.

Road Traffic

In the village

31% want measures to slow down traffic. Responses indicated problems are most often experienced by those living at the edges of the village. 37% wanted better signs and hazards warnings. In the youth questionnaire we asked what would make roads safer on the village and 25% of respondents wanted the traffic to slow down.

Ideas	No. Suggesting
Speed bumps e.g. north end & at the bend	12
30 mile signs moved further out of village	5
Enforce rules e.g. police	4
Improved signs generally	4
Sheep hazard signs	2
Improved signs at the bend	2
Less cars parked in street	2
Lane lines	2
No parking on the bend	1
Toad warning signs	1

On the A170

When asked about new measures to make the main road turn off safer 72% are in favour of changes and 35% wanted to see traffic slowed down.

Summary of ideas for A170 turn off	No. suggesting
Reflectors /white curb at junction	8
Cleaner/ more appropriate signs	4
Slip road/chevrons/ deceleration lane	5
Widen the turning	1
No overtaking at turning	1

Community Environment

The state of the back lanes are highlighted by 4 people e.g. fallen branches, level of mud, dog fouling and general deterioration. Comments made by 1 or more persons included burglar alarms, speeding traffic, bull in field, street light pollution, abandoned vehicles and rubbish. 1 respondent highlighted the cost of disposing of fallen stock.

Issue	% experiencing persistent or occasional problems
Gates left open by walkers & riders	30 %
Blocked/overgrown/ploughed Rights of Way	23 %
Spraying of crops and paths	17 %

Noise /smell pollution	14 %
Fallen stock	12 %

Dog Fouling

34% see this as a problem, 3 residents said the situation had improved.

Ideas	No. people suggesting
Educate owners on responsibilities and health risks	8
Promote 'poop & scoop'/install bins	8
Report those responsible	2

Bulb planting

44 people are for, and 52 against bulb planting. 9 people thought sheep would eat the plants and 2 people thought this might result in verges being made 'off limits' to sheep.

Spaunton Quarry

62% of respondents want to be kept informed of future planning issues. This is a summary of the most often mentioned concerns and ideas.

Comments	No. of people
Continue as a quarry	7
Leave as a wild life sanctuary	7
Information & consultation required	6
Opposed to landfill	5
Change to recreational use	5
Opposed to an extension	4
Problems with dust & pollution	3

National Park Planning Authority

17% are not generally supportive of the planning regulations. The new retrospective planning enforcements were a concern to 2 residents and one resident highlighted the lack of grants.

Comments	No. of people
Decisions seem inconsistent or confusing	9
Regulations too strictly applied	4
Plastic doors and windows a problem	3

Privately installed street lighting

Most respondents were either not bothered or comfortable with present arrangements. 13% feel there should be a decrease, particularly in 'security lighting' which was described by one person as 'over enthusiastic'. 6% feel there should be an increase.

Community Activities

Village Archive

17 residents and 5 non residents have volunteered to make material available to build an archive. The 'Clubs and Interests' forms recorded 10 people who want to be involved and 16 people who want to belong to a local history club.

The following suggestions (summarised) were made regarding the creation of a village archive;

- create a CD archive that could be loaned out or bought.
- images could be copied or reproduced etc. to raise funds
- recordings of spoken accounts of life in Appleton Le Moors.
- ensure accessibility and security of the material

Pantomime

This topic, which appeared in the youth questionnaire, had a positive response from 16 respondents; that's 100%! 10 want to watch a pantomime, 6 want to help produce and 11 want to be in the cast.

Youth Club

14 young people were interested in a youth club and 4 people would be willing to travel to another village to join one.

Interests	No. of suggestions
Sport & games e.g. badminton, table tennis & football, snooker/pool, darts, paint balling	16
Art, music, drama	4
Board games	3

Village notices

20 adult respondents want to be able to advertise items for sale, services and so forth. There were several suggestions which included using the village hall, local newsletter, church magazine, trades directory, village website, larger or new notice boards.

Transport

Car use

The majority of residents travel by car, 63% of adults have sole use of a car and 29% share a car. There were 3 comments that car parking in the street and on verges should be discouraged but no reasons given.

Village bus service

4 out of 7 young people in the 12 to 16 age group currently travel independently on public transport. When asked if the village bus would be useful as a regular means of transport if times and destinations were changed 9 adults said yes and a further 4 young

people were interested in using the service at weekends to York, Pickering, Malton and Kirkbymoorside. 79% of adults would not consider the local bus at all.

Main road bus service

Currently 3 people use the A170 bus regularly, stopping at a variety of places. The number of people who would consider using main road buses is relatively small, 14 people, but this may be significant in terms of rural transport initiatives. 88% of adults would not consider using the main road service even if changes were made.

A bus timetable in the village was important to all 14 potential users as well as a local taxi to and from the stop. An express service was important to 8 respondents. 3 young people would use the main road service if there was a secure bike shed, proper shelters and more frequent buses.

Moors Bus

70% of adults favoured the Moors Bus stopping in the village. From the youth questionnaire 3 of the 5 respondents, who travel alone by public transport, indicated they would use it.

Additional comments

The following are 'one-off' comments unless there is a number in brackets. This shows how many people made the same or similar suggestion.

Public Facilities

Waste bins top & bottom of village (2)
Affordable housing for young people (2)
Two post collections daily
Rubbish bin near the plantation seat
Small shelter for school bus and walkers
Post box not suitable for A4 envelopes
Widen Hamley Lane

Environmental

Village to stay as it is today (6)
Avoid urbanisation / modernisation (2)
Sheep droppings

Community Initiatives

Christmas lights
Village van share
Plant trees on verges e.g. rowan
Volunteer car service for elderly
Various Committees to pool resources
Youth club for the area

Plant swap
Village 'tug of war'

Action Plan for Appleton le Moors 2004

Priority level takes into account the level of support, consequences of no action, and realistic timeframes. **Low** = next 2 years, **Medium** = next 12 months, **High** = next 6 months.

Key to abbreviations : **NYMNPA** - North York Moors National Park Authority, **RDC** - Ryedale District Council, **YRCC** - Yorkshire Rural Community Council, **NYCC** - North Yorkshire County Council, **ALMRA** - Appleton Le Moors Recreation Association, **NPFA** - National Playing Fields Association

Social Activities

Topic	Response from residents	Initial Action points	Lead responsibility	Partners	Priority
Youth Club	14 (88%) of under 16's support	Form volunteer group	Youth Club project group	Ryedale Youth & Child. NYCC (community & educ.)	medium
Pantomime/show	100% of under 16yrs	Form volunteer group	Village show project group	Village hall, RDC arts officer	medium

Retail Services

Topic	Response from residents	Initial Action points	Lead responsibility	Partners	Priority
Existing retail services	up to 57% use	Form volunteer group to coordinate and distribute information	Retail project group	Retail traders	medium
Potential Retail services	up to 42 % interested	Form volunteer group to investigate new providers	Retail project group	Retail traders	medium
Broadband	43 people	Parish plan SC feedback to local Broadband coordinator in Lastingham	Existing local campaign. (Lastingham based)	B.T., RDC Economic Dev. Officer	high
Fuel bulk buy discounts	57 / 71 people	Form volunteer group to investigate new providers	Retail project group	Retail traders	medium
Gas supply	51 people	Form volunteer group to investigate new providers	Retail project group	Supply companies, NYCC	medium

Special interest groups					
Topic	Response from residents	Initial Action points	Lead responsibility & partners	Associates	Priority
Village Archive	17 volunteers	Form volunteer group	Village archive project group	RDC Arts Officer, Ryedale Museums	medium
Village Pond restoration	77% want it restored. 12 volunteers.	Form volunteer group	Village pond project group, Landowner, NYMNP (ecology officer)	NYMNP, RDC (Tree officer) Court Leet, Parish Council	high
Bulb planting	44 residents in favour	Form volunteer group	Verges project group, Landowners, NYMNP (biodiversity officer)	Landowners, Court Leet, Parish Council	low
Village notices/ Communications	20 residents want to advertise goods/ services	Form volunteer group to look at communications options. Events communications also needed	Communications project group	Parish Council (notice board only), RDC	low
Village sheepfold restoration	69% in favour. 10 volunteers	Form volunteer group	Sheepfold project group, Land-owners, NYMNP	Land-owners, Court Leet, RDC	medium
IT training	36 want training	Seek volunteer coordinator	volunteer coordinator	RDC, NYCC (Rural Arts)	high
Parish Council					
Topic	Response from residents	Initial Action points	Lead responsibility & partners	Associates	Priority
Street lighting	14% want either increase or decrease	Feedback through the Parish Plan report to Parish Council for discussion and decide action.	Parish Council		low
Dog fouling	34% say it's a problem	Feedback through the Vital Villages report to local dog owners.	Parish Council	Dog Warden RDC	medium
Playing Field Maintenance	48% would pay increase in community charge	ALMRA submit costings to Parish Council. PC reviews.	Parish Council, ALMRA	NPFA, YRCC, Local Councils Assoc.	high

North York Moors National Park Authority						
Topic	Response from residents	Initial Action points	Lead responsibility	Associates	Priority	
Tourism	16% in favour of increase / 71% not in favour	Feedback to the NYMNP through the Parish Plan report.	NYMNP, RDC	Parish Council	low	
Planning regulations	17% not supportive	Feedback to the NYMNP through the Parish Plan report.	NYMNP, RDC	Parish Council	medium	
Environmental concerns	12 -23% experience problems	Feedback to NYMNP through the Parish Plan report.	NYMNP, RDC	Parish Council	medium	
Moors bus	70% in favour of Appleton stop	Feedback to NYMNP through the Parish Plan report.	NYMNP		high	
Public Transport						
Topic	Response from residents	Initial Action points	Lead Responsibility & action group	Associated	Priority	
Local village service	13 residents would use if rescheduled	Form volunteer group. Work with Rural Transport officer to revise schedules	Transport project group, RDC, NYCC	NYMNP, Ryedale Voluntary Action	medium	
Main road service	17 residents would use if services and or facilities improved	Form volunteer group. Work with Rural Transport officer to revise schedules	Transport project group, RDC, NYCC	NYMNP, Ryedale Voluntary Action	medium	

Ryedale District Council					
Topic	Response from residents	Initial Action points	Lead Responsible & Action group	Associates	Priority
Refuse collection	14% not satisfied	Feedback through the Parish Plan report to RDC	RDC	Parish Council	low
Recycling facilities	75% want local facility	Feedback through the Parish Plan report to RDC	RDC	Parish Council	high
Road gritting & snow clearance	14% not satisfied	Feedback through the Parish Plan report RDC	RDC	Parish Council	low
Road maintenance	45% not satisfied	Feedback through the Parish Plan report	RDC	Parish Council	medium
Drainage	46% not satisfied	Feedback through the Parish Plan report	RDC	Parish Council	medium
Police service	20 - 40% Support for advice and visits	Feedback through the Parish Plan report to local community policeman	NYCC Police Authority	Parish Council	medium
Neighbourhood Watch	61 % want re-launch	NYCC Police Authority to be notified	Neighbourhood Watch coordinator		high
Mobile Library	24 potential new users	Feedback through Parish Plan report	NYCC, RDC		medium
Traffic management A170	72% want changes	Form volunteer group. Feedback RDC and NYCC through Parish Plan report	Traffic project group, RDC, NYCC	Parish Council	high
Traffic management within village	31-37% want improvements	Form volunteer group. Feedback through Parish Plan report	Traffic project group, RDC, NYCC	Action Group Parish Council	medium