



Ampleforth Parish Plan



Introduction

Ampleforth Parish Council first decided to move towards the preparation of a Parish Plan in 2004, in response to a programme launched by the Countryside Agency called 'Vital Villages'. With the help of the Yorkshire Rural Community Council they successfully applied for a grant.

In September 2005, an open meeting for all parishioners was held to explain the nature and purpose of a Parish Plan. This resulted in the formation of a Steering Group which included the District Councillor and representatives from each village organisation. The main task of the group was the preparation of a questionnaire designed to find out what the community wanted for the future development of Ampleforth. The results would provide the basis for a plan which would be used by the relevant authorities when any development for the area was being looked at.

The questionnaire was delivered to every household and 194 were returned, a response rate of 53%. A group of volunteers collated and analysed the responses - the main theme was that the historic and heritage features and appearance of the parish should be protected in its present state. The 'country setting' was the feature which people liked most about living in Ampleforth, which was also felt to be a friendly community.

The following pages form the basis for a plan of action which will reflect the needs, concerns and aspirations of the community. It will only succeed if everyone comes together to form an active dynamic community and the fact that some thirty volunteers have already been actively working to help to produce the plan is a hopeful sign.

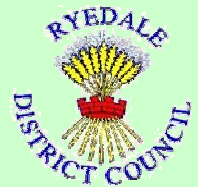
Thank you to everyone who answered the questionnaire - this is a big step forward for Ampleforth.

Freda Shaw, Steering Group Chairperson

May I welcome the first Ampleforth Parish Plan, which contains many values and aspirations for the community. It will be a valuable guide to all those who are involved with making decisions in the interests of the parish, and I look forward wholeheartedly to using it for that purpose and encouraging others to do the same.

Jim Bailey

Cllr. J R Bailey is ward member for Ampleforth on Ryedale District Council and a local member on the North York Moors National Park Authority



Ampleforth is to be warmly commended for its work in establishing their first parish plan. It identifies key local issues which organisations such as the County Council need to take note of. I and the County Council look forward to working with the parish council alongside the local community, and other partners, to help Ampleforth achieve its full potential.

Clare Wood

County Councillor and Member of the County Council's Executive and Member for Hovingham and Sheriff Hutton Division



Ampleforth straggles for a mile along the southern slope of the Hambleton Hills on the southern edge of the North York Moors, but over the years it has spilled into the valley so that today it is one of the largest villages in Ryedale. It was never an estate village as so many others were, and still are, so it developed as a village of freeholders.

It is mentioned in Domesday Book as *Ampreford*, the ford of the sorrel plant. There is evidence in Studford Ring, on the hill above the village, that Bronze Age man was here and the Anglo-Saxon field system can still be traced on the slopes above the village. The Church of St. Hilda is named after the Saxon Abbess of Whitby and was built mainly in the thirteenth century - the earliest work is the tower arch and the blocked north doorway, dating to about 1250. Though there is little visible evidence today, a community of Quakers lived in Shallowdale at the west end of the village and grew flax there.

To the east of the village stands Ampleforth Abbey and College. Benedictine monks came to a small house here in 1802 and established a boys' school which is now the leading Roman Catholic public school in the country. It is natural that the growth of this establishment had, and continues to have, an impact on the village and its life in both a spiritual and materialistic way and has contributed to the village's expansion in modern times.

Many trades, particularly the building trade and its subsidiaries, grew up and flourished, partly because of the freehold status of the village, as well as the enterprising abilities of the inhabitants. Along with this came the natural amenities of village life and because of its size there was a time when Ampleforth boasted two churches, two chapels, two schools, two pubs, two village halls, two butchers, two cricket teams, several shops - grocery, bakery, haberdashery, fish-shop, pie-shop - a weekly cinema and successful teams in football, billiards and darts. Ampleforth was one of the earliest villages to have a post office, which thankfully it retains today when many neighbouring villages are losing theirs.

With changing times, aspects alter and some are lost. An event of great attraction in the latter part of the nineteenth century and the early part of the twentieth was the Ampleforth Feast, when all held 'open house' and sporting events, parades and cattle judging took place. Similar events, though not on the same scale, have been run at various times, including a gymkhana that became noted in the surrounding area in the early 1950s. Ampleforth boasted one of the oldest Sword Dances in the country - the Dance, an intricate routine, formed the central part of a folk play. The actual dance was revived and performed by a group of boys from Ampleforth College in 1950.

While many of the former trades are still practiced in the village, technology has brought different demands and employment beyond its boundaries but, at its heart, it still retains a life revolving around its two churches, two schools, two village halls, two pubs and the village shop.



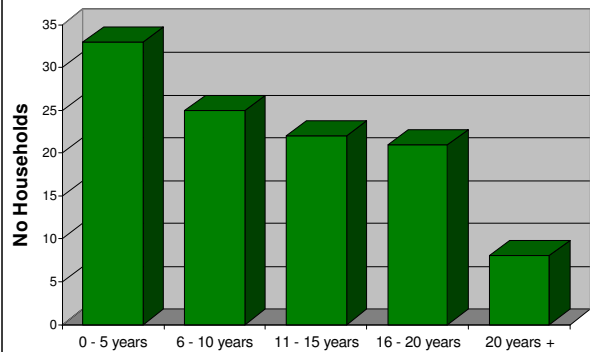
Households

In January 2006, questionnaires were delivered to the 366 households in the parish. 194 (53%) were returned. The responses are summarised in the following pages. Not all households answered every question.

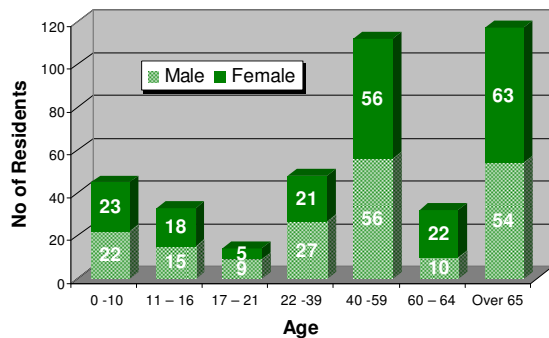
What did we ask about?

- Length of residence in Ampleforth
- Ages of occupants
- Employment and education
- What the residents liked or disliked about the village
- Employment and education
- Car ownership

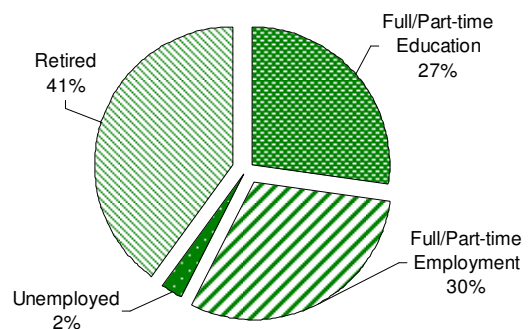
Length of Residency



Age of Residents



Education & Employment Statistics



Features People liked about Ampleforth

- 154 households liked the country setting
- 81 households liked the friendly community

Features People disliked about Ampleforth

- 53 households mentioned poor access to public transport
- 26 households noted the lack of facilities for children and young people
- 23 households identified the distance from work and education

Car Ownership

The households that responded owned:

- 240 cars
- 78 bicycles
- 17 vans
- 5 motorcycles

140 households used their cars to travel to work or education.



Village Design

What did we ask about?

- Location of any new housing development
- Design of new houses
- Which historic/heritage factors were to be protected
- What visual features were important
- What spoils the village environment
- Location of any industrial/commercial development

New housing development:

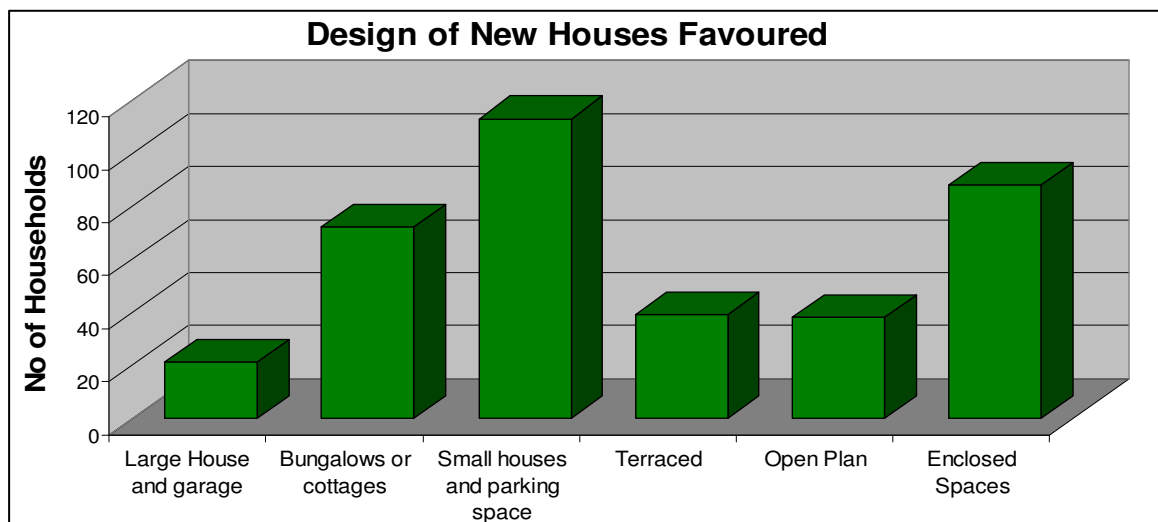
Of the 194 households that responded –

- 116 respondents wanted development scattered throughout the village
- 44 respondents wanted development on one site.

Protecting Historical/Heritage Features: 116 respondents said they should be protected

Important Visual Features: Stone buildings, open fields, views across the valley, churches/churchyards, pantile roofs.

Important Views to be maintained: Yearsley Bank and woods, Temple View, Beacon, Shallowdale over the valley, view from Back Lane.



Features which spoil the village: 134 respondents said 'derelict buildings', 114 respondents said 'parked cars', 56 respondents said 'overhead electricity and telephone lines'.

Industrial/Commercial Development: 33 respondents said 'Yes' and 116 respondents said 'No' to permitting further appropriate development. Location – Benson's Yard, land next to Sewage Works, old petrol station and redundant barns.

Other Comments: Maintain look of buildings on the open Main Street - stone houses, slate roofs, original windows and doors, wide grass verges, walks around the village, bridge and stream, the old trough at East End, the White Swan floral displays, the bench at West End, the Millennium field and pond, sports field and playground, Knoll Hill and such features as the pump.

These all gave character to the village and were important to the community

Housing

What did we ask about?

We asked about the type of housing people thought the community needed. We provided the following list for people to select YES/NO

- Housing for Young People
- Housing for Large Families
- Housing for Elderly People
- Accommodation for the elderly – with wardens

We also asked what people felt about the village growing.

We wanted people to comment about housing in general.

More Housing is needed for:

Young People	86
Large Families	9
Elderly People	20
Elderly People (with wardens)	33
(Did not respond	46)

Need for more housing in the village?

YES 55% of respondents
NO 27% of respondents

Type of Property

Owner Occupier	78%
Private Rented	5%
Council Rented	2%
Sheltered Housing	3%
Housing association	6%
Tied Accommodation	1%
Grace and Favour	0.5%

What was written about Housing?

People were concerned about:

- Lack of affordable housing
- Inappropriate housing development changing the character of the village
- The number of second/holiday properties in the village
- Small houses with parking spaces
- Village currently large enough for the services provided
- Loss of community feeling/character of the village becoming too large
- Detached houses and bungalows preferred style
- Conversion of existing farm buildings

A small amount of growth (10% - 20%) would be acceptable, a policy which favoured local people and met the needs of first time buyers, and the elderly would be supported. Residents did not want to see expansion of the village to the east or west.

Affordable Housing should be:

All new housing	44
Around one half	37
A small proportion	39
Did not respond	54



Transport & Traffic

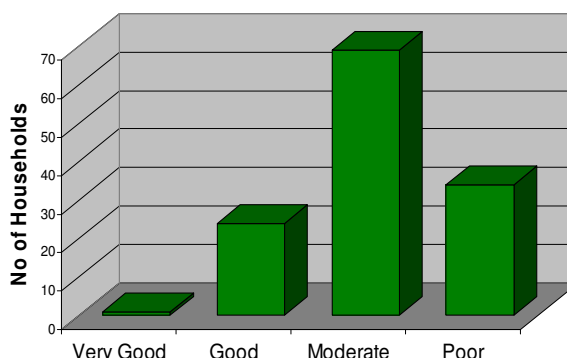
Transport – What did we ask about?

- Satisfaction with existing bus service
- What people used the bus service for
- The destinations most wanted

The bus service:

- is never used by the majority
- is used by 42 respondents for occasional shopping
- is used by 25 respondents for social/recreational purposes
- is used by 12 respondents once/twice a week regularly
- would be used by 100 respondents in the morning

Satisfaction with Existing Bus Service



Which Destinations?

- 129 wanted services to York
- 98 wanted services to Malton
- 124 wanted services to Thirsk

Only 17 people use the community car scheme – 13 may in the future.

Traffic – What did we ask about?

Concerning Road Safety:

- Should this be a high priority?
- Are the facilities for pedestrians good?
- Are there problems with the parking of cars?
- Are the speed limits enforced?
- Are there safe places to cross the road?

Road safety should be a priority?

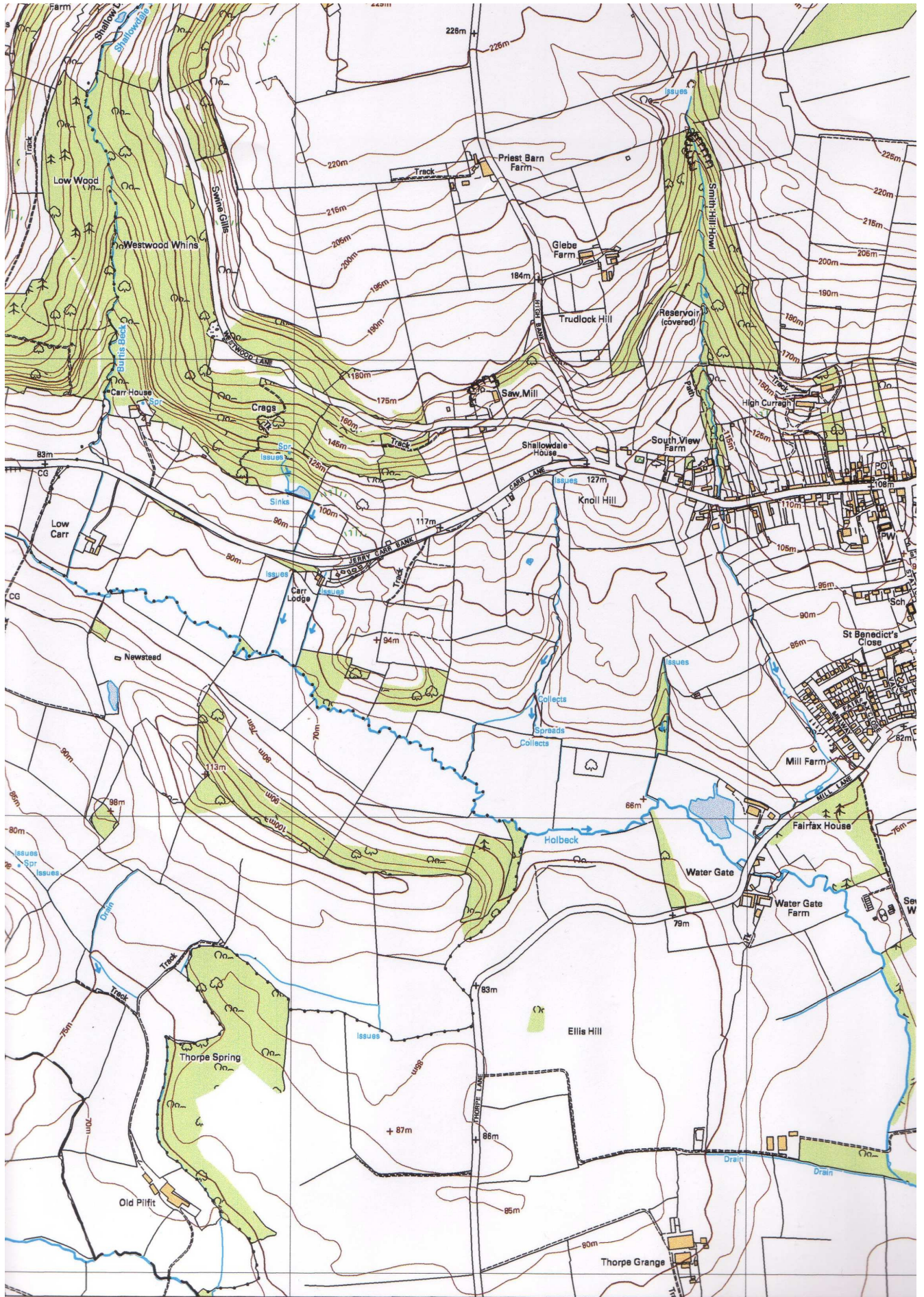
- 115 strongly agreed
- 47 agreed

Facilities for Pedestrians?

- 88 respondents thought that facilities for pedestrians were fair. 52 felt that they were poor
- Dropped kerbs were a problem for the elderly, those using electric scooters and for people pushing prams
- The lack of pavements to St Benedict's School, along Back Lane, is a problem

For future consideration:

- Footpaths need improved surfaces.
- Wider footpaths are needed at East End.
- Better lighting is needed on Main Street.
- A 20 mph speed limit should be introduced along Station Road by St Hilda's School and through Back Lane.
- The quantity of heavy goods vehicles coming through the village should be monitored.
- Improved diversions for traffic when Sutton Bank is closed





Community Services

What did we ask about?

- How to get information about local events
- Would more information sites be welcome
- Extending the use of the village halls
- Adding extra utility services
- Knowledge of the Parish Council Precept
- Satisfaction with Parish Council activities
- Use of the village shop

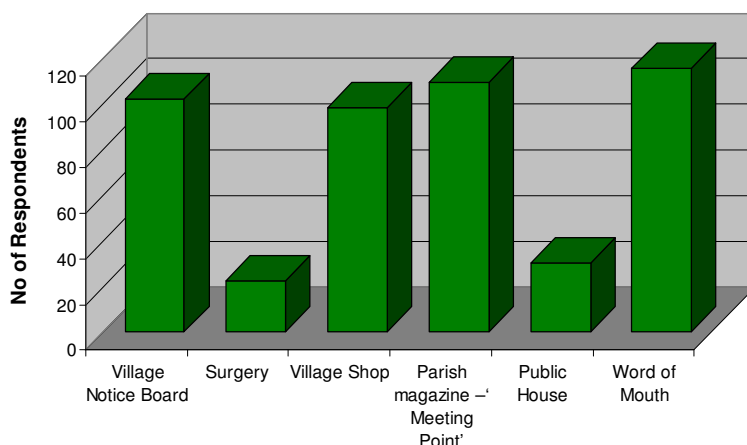
Suggested Additional Sources of information:

- Directory of Local Services (44)
- Another newsletter (25)
- More Notice Boards - especially outside the shop (23)
- A Village Website (21)

Extending the use of the village halls:

- Entertainment eg plays (84)
- More social events (52)
- Internet access (24)
- Citizens Advice Bureau (32)
- General Information – 'one stop shop' (22)

Information about Local Events obtained from...



Satisfaction with Utilities?

- There was general satisfaction with those provided
- Kerbside collection of plastics and cardboard requested

The Parish Council:

- Two thirds of those responding did not know how the precept was raised or spent. Of the 53 who were aware, only 4 were dissatisfied or very dissatisfied with the way it was spent.
- 31 from 144 who responded had attended an annual parish meeting within the last 3 years. Over 50% of those not attending did not know when the meetings were held.

Village Shop/Post Office:

- Of the 194 households that responded, 159 valued the convenience of the shop/post office and 130 wished to support the shop.
- The majority used the shop once per week, with considerable numbers using it more than once per week. Some used the shop 2 or 3 times per month.
- The Post Office counter is used primarily for postal services.



What did we ask about?

- Registration with a GP Surgery
- Registration with a dentist
- Registration with a chiropodist
- Where do you access healthcare information
- Should there be a 'First Response Team' in the parish
- Satisfaction with response times of the Ambulance Service
- Satisfaction with hospital provision in the area
- Knowledge of complaints systems

Access to healthcare information:

143 households had access – 16 did not

Suggested sites for information:

GP surgeries, village shop, a website, patients' handbook, local newspaper or magazine

Knowledge of NHS Complaints System:

75 = YES, 82 = NO

The provision of a small care home for elderly residents: 156 in favour – 4 against

A 'First Response Team':

134 households would like this facility in the parish – 21 would not.

Those who disagreed said provision was adequate and were worried about the cost within NHS budgets.

Registration with Health Care Providers

GP

Ampleforth	66
Helmsley	17
Coxwold	2

Dentist

Helmsley	61
Easingwold	21
York	14
Kirkbymoorside	13
Thirsk	10
Other (14 surgeries)	20

Chiropodist

Helmsley	7
Home-Service and mobile	6
Other (6 venues)	6

Provision of care and help for carers:

Households looking after:

- An elderly person 21
- Elderly and disabled persons 12
- Young disabled person 5

Additional help required from:

- Doctors 1
- Nurse/Health Visitor 4
- Occupational/other Therapists 3
- Social Services 3

Help would be welcomed from charities

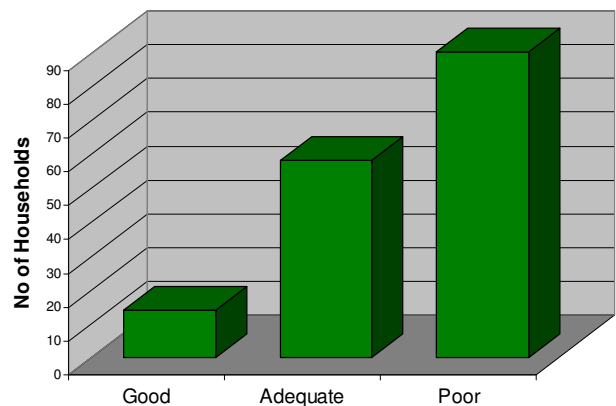
- Age Concern 10
- Day centre 6
- other neighbourhood and voluntary schemes 10



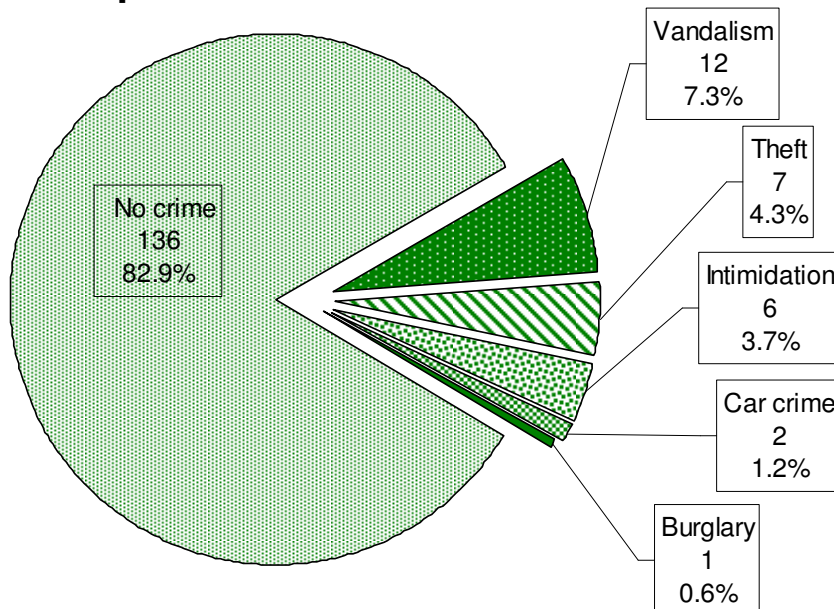
What did we ask about?

- The standard of police coverage
- Experience of crime within the parish
- Neighbourhood Watch Scheme
- Knowledge of local policing

Satisfaction with Police Coverage



Experience of Crime in the Parish



Neighbourhood Watch Scheme:

- 138 households in favour of such a scheme – 17 households were against
- 95 households expressed willingness to participate in such a scheme

Is Crime and Anti-Social Behaviour a problem?

- 98 households said 'no'
- 47 households said 'yes'
- 141 households said that prevention should continue to be an important/high priority

Local Police Officer:

Of the 177 households that answered the question:

- **35 (19.8%) knew who their Police Officer was**
- **25 (14%) knew how to contact the officer directly**

Sport & Recreation

What did we ask about?

- How many people were involved in any sport or social group in the parish
- What were these
- What sport or social activities would parishioners support if they were developed locally

Fund raising:

The majority of households responding would not support beetle drives, whist drives or bridge but 66 out of 117 would support a quiz evening.

Of the 194 households that responded only a **third** had members who were active participants in any parish sport/recreation

These included;

- The St Alban's Centre at Ampleforth College
- the Gardening Club
- The Historical Society
- Church coffee mornings
- the Senior Citizens' Luncheon Club, Football
- Golf
- Cricket
- Byland with Wass WI
- Crusaders (Christian Youth organisation)

Interest in Sport and Recreation Activities:

Outdoor Activities

Activity	Age Range	P	S
Football	5 – 17	9	17
Cricket	10 – 20	11	12
Tennis	5 – 75	21	17
Bowls	60 – 65	15	8
Basketball	11 – 20	4	7
Netball	10 – 14	7	10
Rounders	10 – 14	8	9
Skateboarding	10 – 15	6	16

(P = Participating, S = Supporting)

Indoor Activities

Activity	Age Range	P	S
Football	35 – 70	30	15
Table Tennis	11 – 20	5	5
Indoor Bowls	60 – 75	9	7
Discos	14 – 20	10	12
Ballroom Dancing	40 – 70	19	10
Badminton		10	8
Bell Ringing	35 – 65	8	5
Snooker	17 – 36	15	10
Martial Arts		4	8

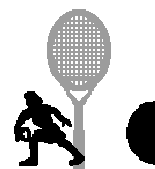
Other Activities suggested:

- A Village Fete
- a Street Fair
- a Gardening Scheme (planting trees and flowers)
- Bingo
- Parish Suppers
- Coffee Mornings and Barbecues

Uniformed Activities for Young People:

Of 124 households responding

- 104 showed support for these activities
- 18 were willing to help



Training & Employment

What did we ask about?

How many people were interested in:

- Seeking employment
- Training opportunities in Ampleforth
- Classes in the village hall
- Transport to work
- Information about training
- After-school and holiday provision for children

Type of training requested:

- Computing for beginners 49
- Foreign languages 44
- Word processing and higher computing skills 40
- 'A' Level subjects 18
- GCSE/NVQ subjects 17

Sources of Information about Employment & Training

Local newspaper	61
Job centre	33
Word of mouth	31
Village notice board/newsletter	23
School/college	16
Library	11
District/County Council	8
Local radio/television	5

Restrictions in choice of work or training:

- 15 households had school age children
- 13 households had young children
- 6 households had to care for elderly/disabled persons

- Public/employers' transport was used by 17 households to get to work
- 27 would use such transport if it was available at the right time

16 members of responding households were interested in finding employment – of which 7 were in the 16 to 25 age group, and 7 in the 46 to 60 age group.

38 households would like training opportunities to be available in Ampleforth.

After School/Holiday Clubs:

37 respondents thought that provision was insufficient – 11 disagreed

Holiday activities – 15 households would use these + 23 would use them occasionally

After-School clubs would be used by 9 households, 10 would use this only occasionally and 18 would not use one

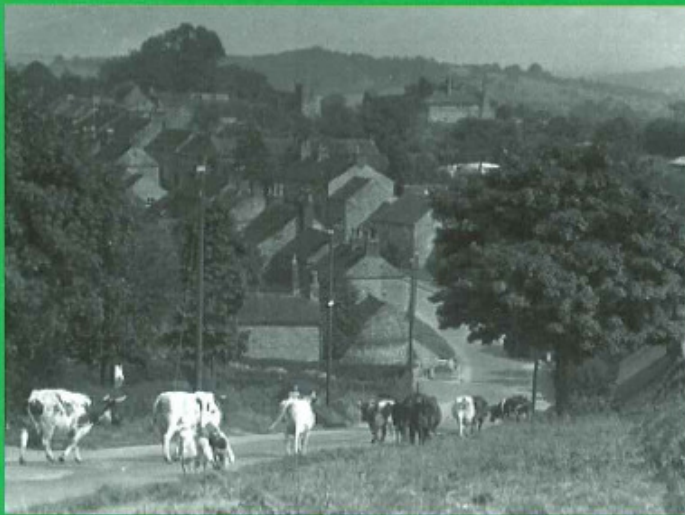
Classes wanted in the village hall:

36	country/line dancing
35	painting/drawing/photography
35	upholstering
29	woodwork
28	aerobics/yoga/Pilates
21	ballroom/Latin American dancing
21	craft making
20	cookery
19	flower arranging

Action Plan

PC = Parish Council, PCT = Primary Care Trust, NYMNP = North York Moors National Park,
RDC = Ryedale District Council, NYCC = North Yorkshire County Council
AONB = Howardian Hills Area of Outstanding Natural Beauty

SECTION	ACTION	PARTNERS	PRIORITY	TIMESCALE	RESULT
VILLAGE DESIGN	Prepare a Village Design Statement for the Parish	PC, RDC, NYMNP, AONB	High	18 months	
HOUSING	Lobby for low cost housing and warden assisted accommodation for the elderly.	PC, RDC, NYMNP	High	12 months	
	Housing needs survey.				
TRANSPORT	Highlight the need for a better integrated transport system.	PC, NYCC	Medium	6 months	
TRAFFIC SURVEY	Review traffic issues – traffic calming, speeding.	PC, NYCC	High	Ongoing and 6 months	
	Lobby for a footpath in Back Lane.				
	Improve footpaths - including widening, and dropped kerbs.				
COMMUNITY SERVICES	Notice Boards – improved siting of present boards and position of any additional ones.	PC, NYMNP, AONB	High	3 months	
	Parish Council information.	PC	High	Immediate	
	Extend Village Hall activities	Village Hall Committee RDC	Medium	6 months	
HEALTH	Investigate provision of local dental and chiropody services.	PC, PCT	Medium	6 months	
	Formation of a 1 st Response Team	PC, PCT	High	3 months	
	Formation of a voluntary self-help group	PC, Churches	Low	6 months	
POLICE	Higher profile of local beat officer in the village	PC, Police	High	Immediate	
	Re-launch Neighbourhood Watch Scheme	PC, Police	High	Immediate	
SPORT AND RECREATION	Flower and tree planting in the village	PC, Gardening Club	Medium / Low	9 months	
	Village Fete/Street Fair	PC	Medium	9 months	
	Improved Sports facilities	Volunteers Sports Committee, Village Hall Committee RDC	Medium	9 months	
TRAINING AND EMPLOYMENT	Investigate provision of after-school/holiday clubs	Local Schools and Churches	Medium	6 months	
	Provision of local training facilities	PC, Village Hall Committee RDC AONB YRCC NYMNP	Medium	ongoing	



Copyright: NYCC from the Unnetie Digital Archive - www.northyorks.gov.uk/unnetie

